

138 Maroubra Road, Maroubra

LANDSCAPE DEVELOPMENT APPLICATION PACKAGE

February 2023



Australia
China
South East Asia

Follow us on



placedesigngroup.com

| | |
|---------------------|-----------------------------|
| Report title | 138 Maroubra Road DA |
| Document number | 2522093 |
| Prepared for | Lindsay Bennelong |
| Authors | ZW, ER |
| Revision number | B |
| Revision issue date | 27.02.2023 |
| Approved | TF |
| Reason for revision | For Development Application |

Disclaimer: This report has been prepared in accordance with the scope of services described in the contract or agreement between Place Design Group Pty Ltd ACN 082 370063 and the Client. The report relies upon data, surveys, measurements and results taken at or under the particular times and conditions specified herein. Any findings, conclusions or recommendations only apply to the aforementioned circumstances and no greater reliance should be assumed or drawn by the Client. Furthermore, the report has been prepared solely for use by the Client and Place Design Group accepts no responsibility for its use by other parties.

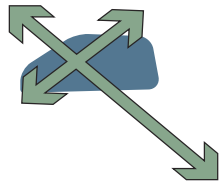
Contents

| | |
|--|----|
| LANDSCAPE VISION - DESIGN PRINCIPLES | 3 |
| LEVEL 1 PRECEDENT IMAGES/ LOOK AND FEEL | 4 |
| LEVEL 1 LANDSCAPE DETAIL PLAN | 5 |
| LEVEL 1 SECTION AA | 6 |
| LEVEL 2 PRECEDENT IMAGES/ LOOK AND FEEL | 7 |
| LEVEL 2 LANDSCAPE DETAIL PLAN | 8 |
| LEVEL 2 SECTION BB | 9 |
| LEVEL 8 PRECEDENT IMAGES/ LOOK AND FEEL | 10 |
| LEVEL 8 LANDSCAPE DETAIL PLAN/ NORTHERN BUILDING | 11 |
| LEVEL 8 SECTION CC | 12 |
| LEVEL 8 LANDSCAPE DETAIL PLAN/ SOUTHERN BUILDING | 13 |
| LEVEL 8 SECTION DD | 14 |
| PLANTING SCHEDULE | 15 |
| PLANTING PALETTE | 16 |
| PRECEDENT IMAGES/ PLANTING | 18 |
| PRECEDENT IMAGES/ MATERIALS | 19 |
| TYPICAL DETAILS | 20 |

Landscape Vision - Design Principles

"A JOURNEY THROUGH THE LANDSCAPE SHAPED BY MOMENTS"

FLEXIBLE + ADAPTABLE SPACE



Allow for placemaking opportunities whilst creating spaces for long term use

PROVIDE COMMUNITY FOCUSED SPACES



Design for better living and to promote areas which enrich our sense of community

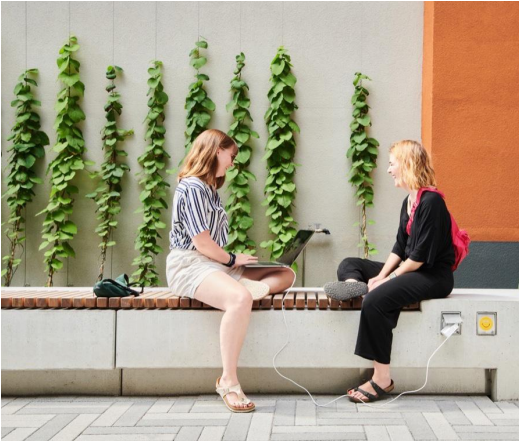
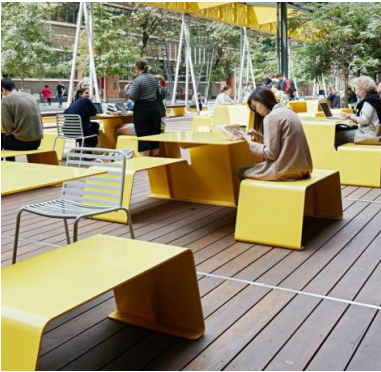
ENHANCING THE URBAN FABRIC



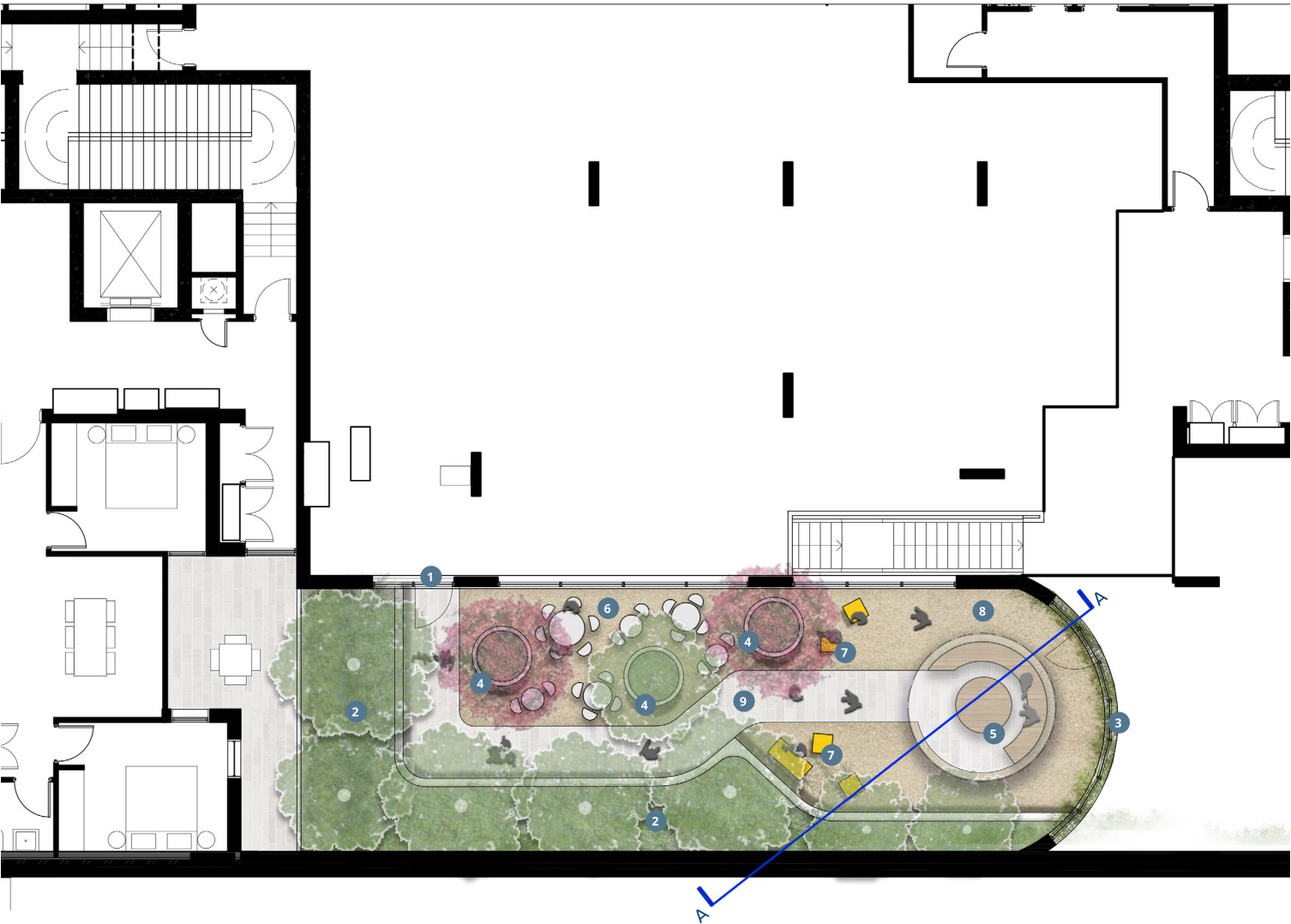
Provide a positive microclimate environment which promotes biodiversity and provides opportunities to embrace nature

Level 1 Precedent Images / Look and Feel

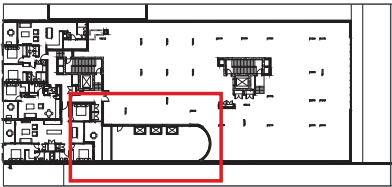
“PROVIDING AN INSPIRING SPACE FOR WORK AND RECREATION”



Level 1 Landscape Detail Plan



LOCATION PLAN



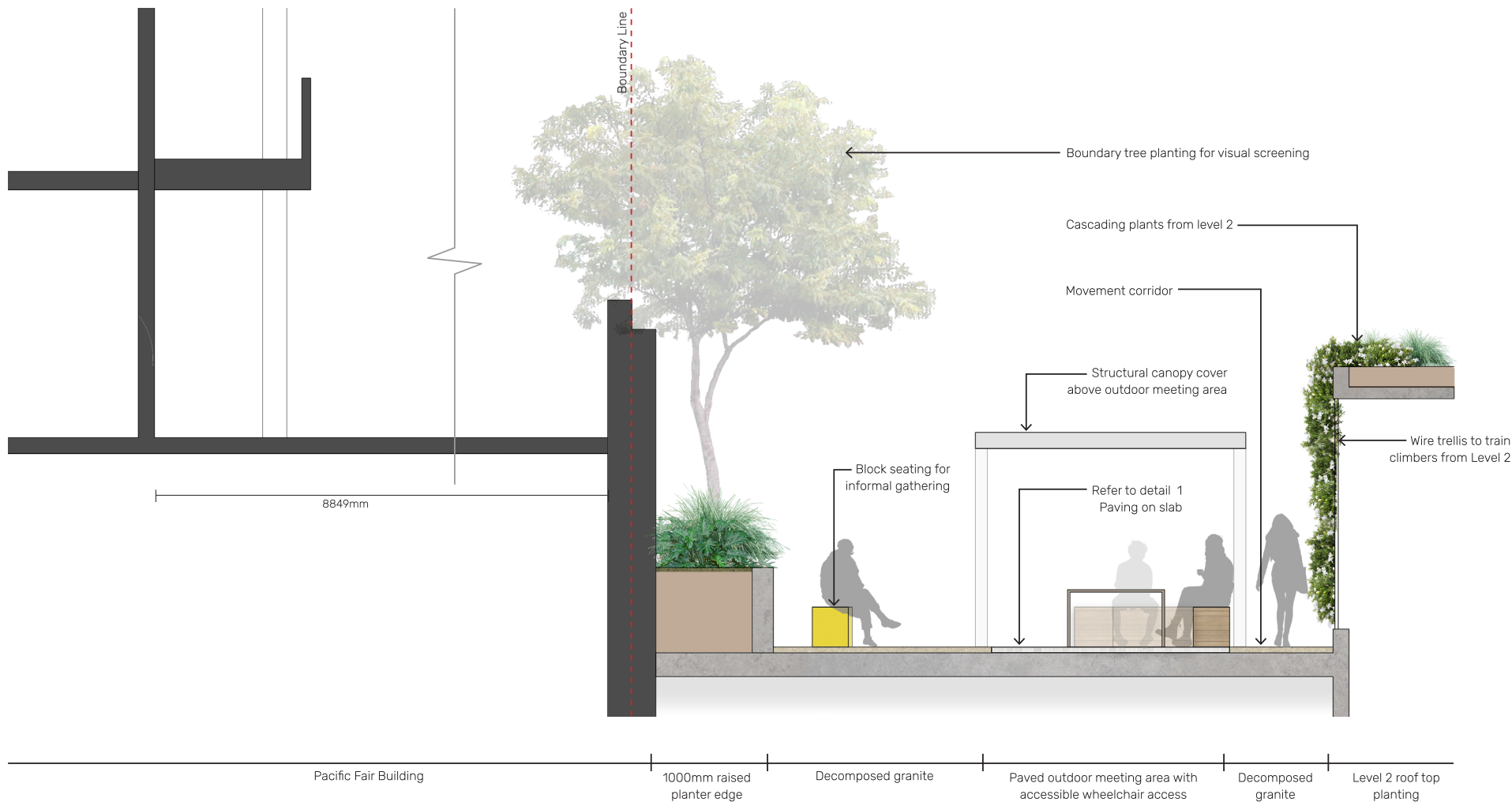
LEGEND

- 1 Building entry point
- 2 1000mm raised planter with layered planting and boundary trees for canopy screening
- 3 Cascading plants from level 2 to soften wall
- 4 Raised pot planters with feature trees
- 5 Outdoor meeting area/communal space with bench seating and accessible access
- 6 Movable table and chairs
- 7 Block seating
- 8 Decomposed granite surface
- 9 Paved surface main access path

KEY

- Paved surface
- Decomposed granite surface
- Block seating
- Moveable table and chairs
- Proposed tree

Level 1 Landscape Section AA

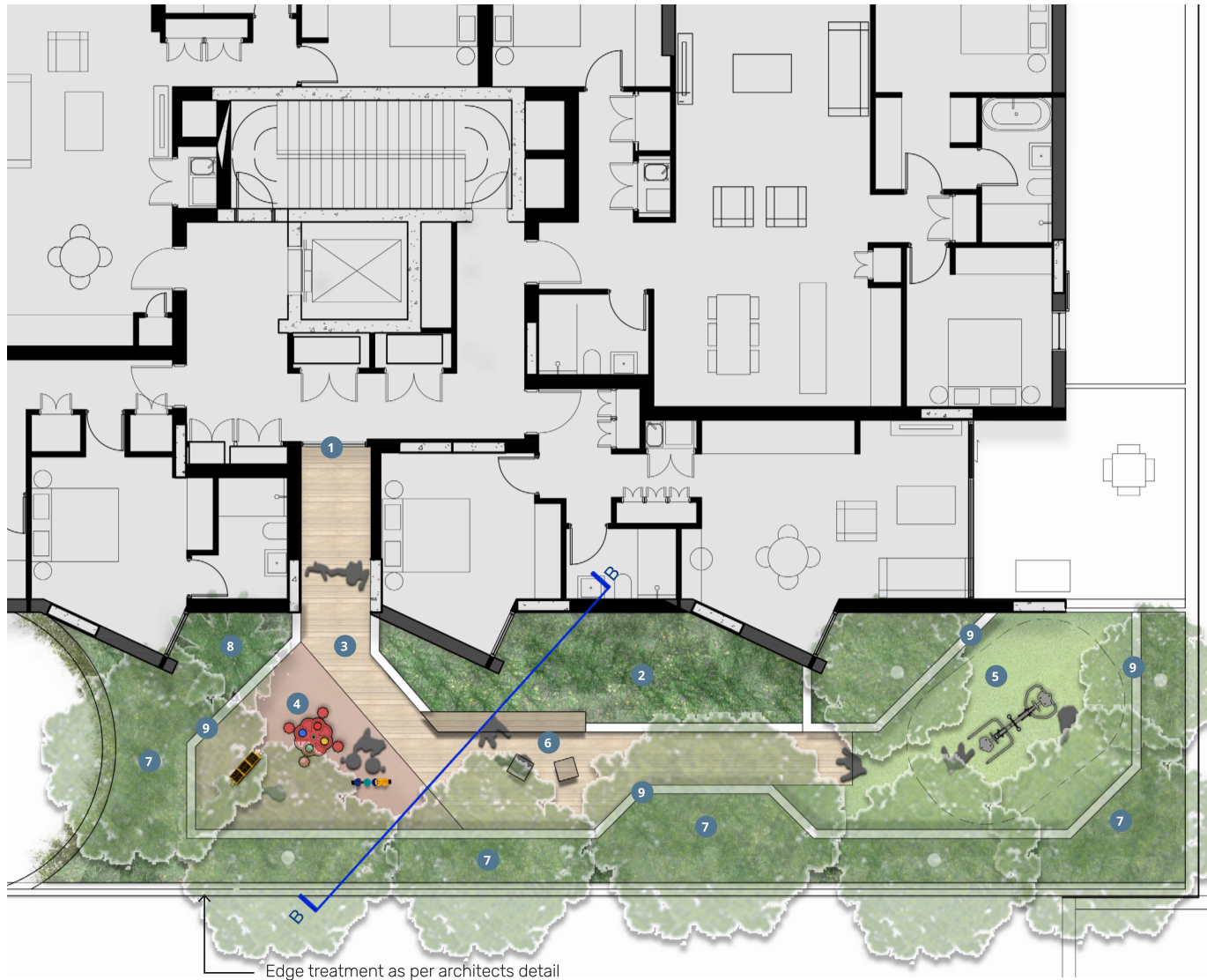


Level 2 Precedent Images / Look and Feel

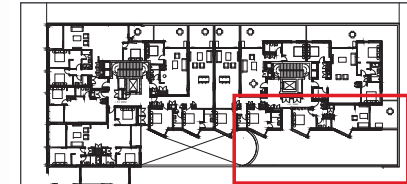


“MOMENTS IN THE LANDSCAPE WHICH ACTIVATE THE SENSES”

Level 2 Landscape Detail Plan



LOCATION PLAN



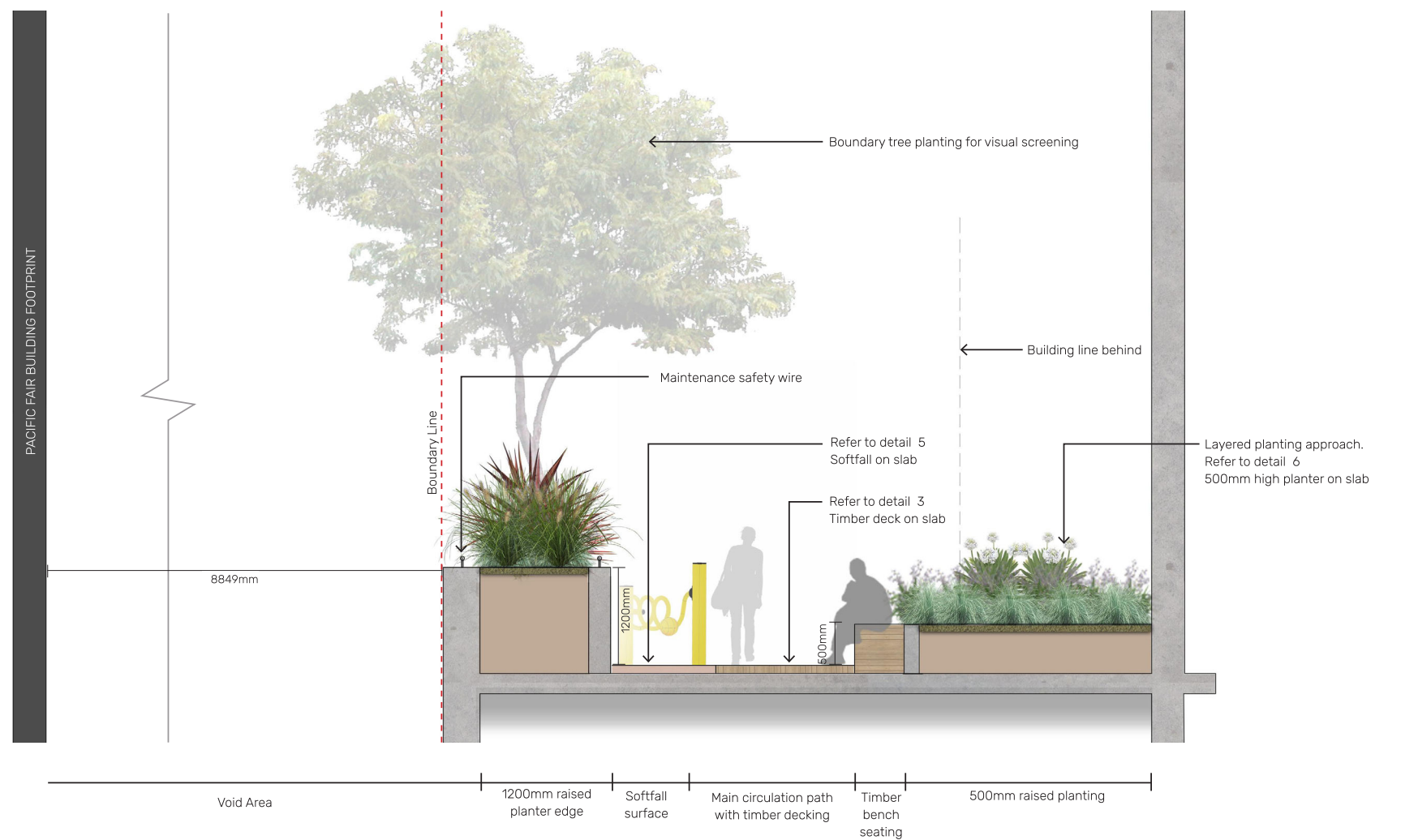
LEGEND

- 1 Building entry point
- 2 500mm raised planter with integrated bench seating
- 3 Timber decking access path
- 4 Imaginative play with softfall surface
- 5 Outdoor gym with artificial turf surfacing
- 6 Timber bench seats with additional cube seats
- 7 Proposed trees for visual canopy screening
- 8 Proposed ferns with understorey planting
- 9 1200mm high retaining wall with layered and spillover planting

KEY

- Timber decking
- Softfall surface
- Artificial turf
- Garden bed
- Imaginative play - flower table
- Imaginative play - noughts and crosses
- Imaginative play - spiral abacus
- Upper strength fitness pod
- Timber bench seating
- Proposed trees

Level 2 Landscape Section BB



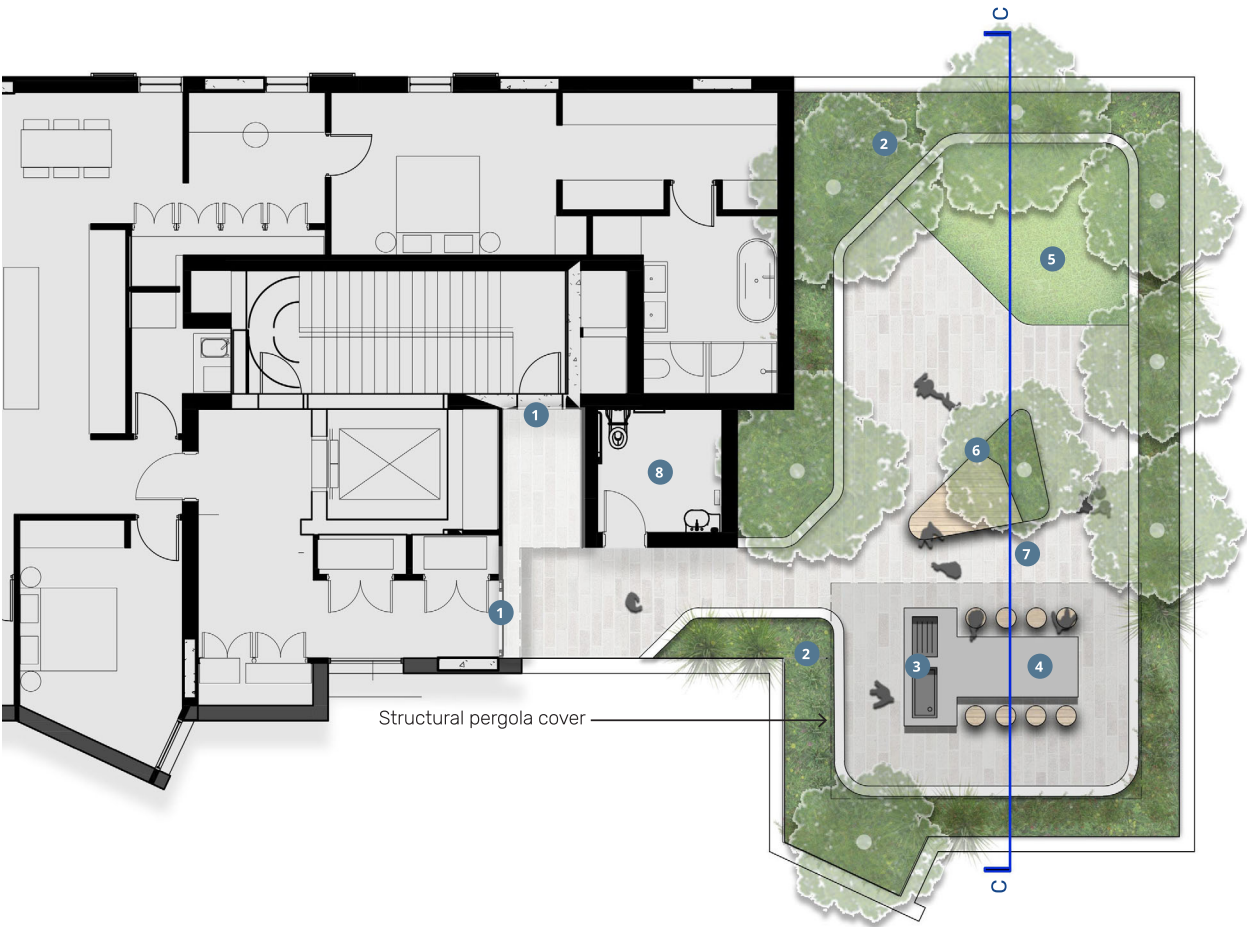
Level 8 Precedent Images / Look and Feel



“DESIGN WHICH INSPIRES A GREATER SENSE OF COMMUNITY”



Level 8 Landscape Detail Plan / Northern Building



LOCATION PLAN



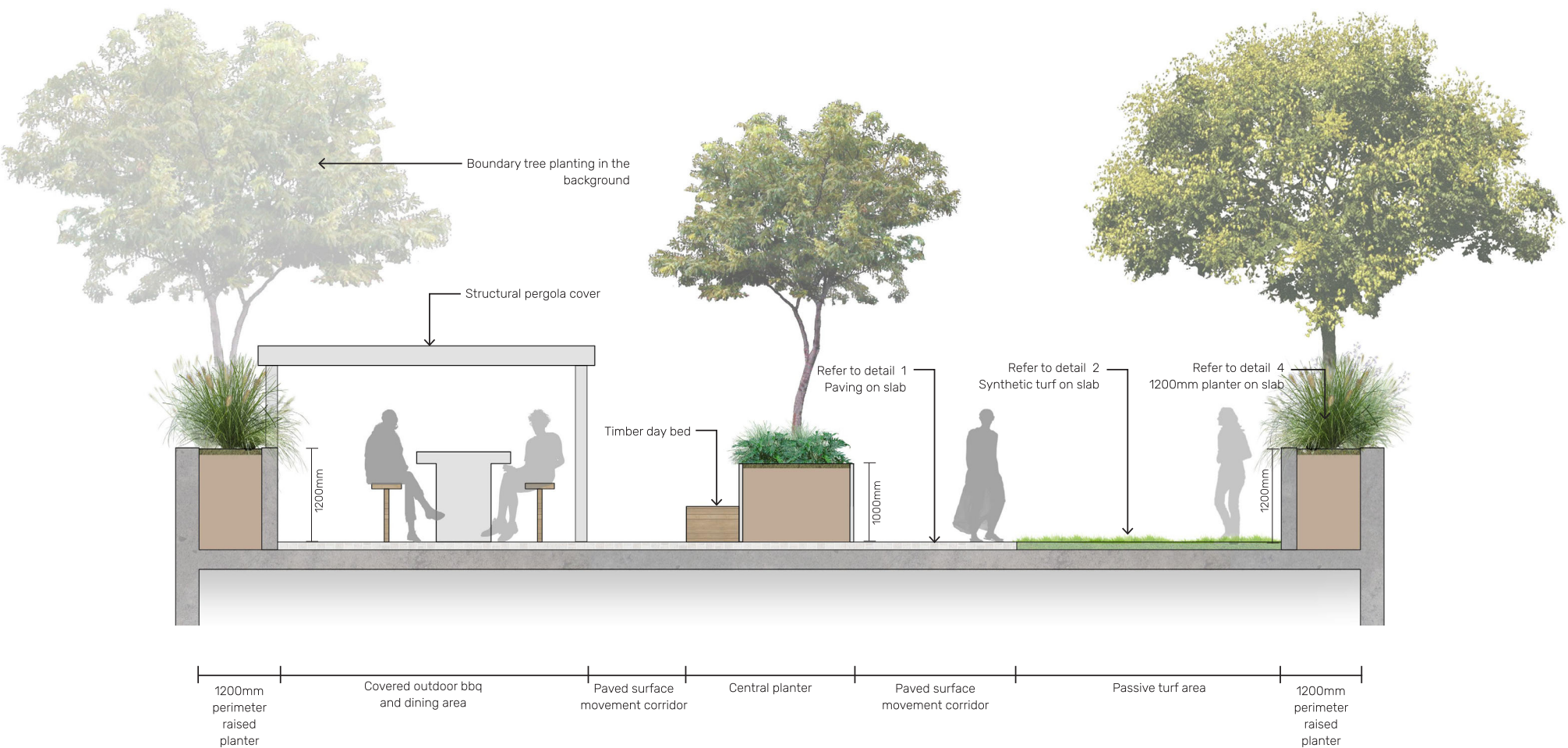
LEGEND

- 1 Building entry point
- 2 1200mm high raised planters with spillover planting
- 3 Outdoor barbeque and kitchen area
- 4 Communal dining table and seats
- 5 Passive turf area
- 6 Raised planter with day bed
- 7 Paved surface
- 8 WC - Amenities

KEY

- Paved surface
- Artificial turf
- Garden bed
- Raised planter with day bed
- Outdoor bbq and communal dining table and seats

Level 8 Section CC / Northern Building



Level 8 Landscape Detail Plan / Southern Building



LOCATION PLAN



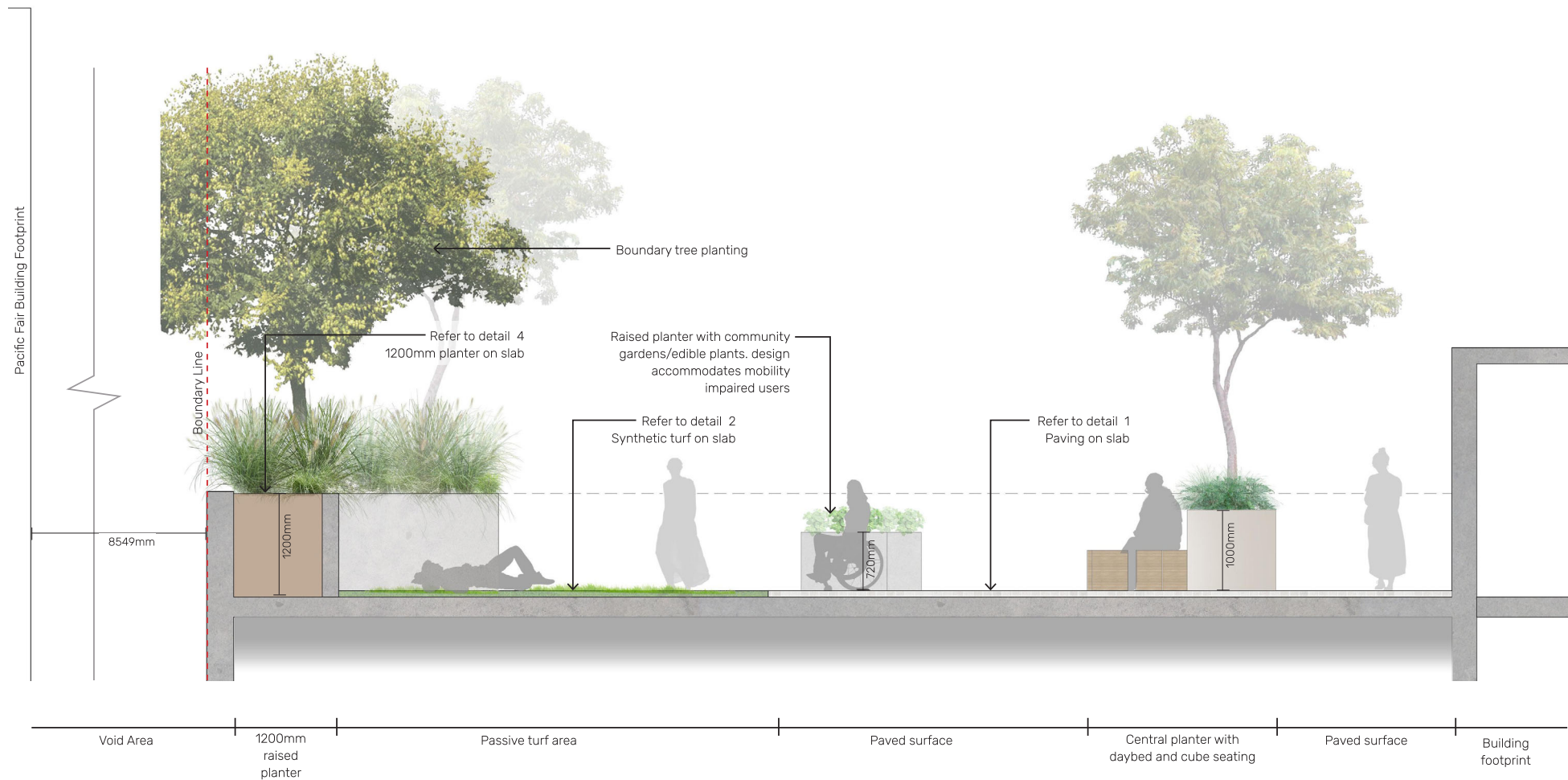
LEGEND

- 1 Building entry point
- 2 1200mm high raised planters with spill over planting
- 3 Central planter with timber day-bed
- 4 Community gardens planters - wheelchair accessible
- 5 Outdoor bbq and kitchen area
- 6 Dining table with bench seating and stools. Gaps in seating to accommodate wheelchair users
- 7 Passive turf area
- 8 Timber cube seats
- 9 Paved surface
- 10 WC - Amenities

KEY

- Paved surface
- Artificial turf
- Garden bed
- Raised planter with day bed
- Outdoor bbq and communal dining table and seats
- Community garden planters
- Cube seating
- Proposed trees

Level 8 Section DD / Southern Building



Planting Schedule

| 138 Maroubra Road Planting Schedule | | | | | |
|-------------------------------------|--------------------------------------|------------------------|-------------------|----------|--------------|
| Level 1 | | | | | |
| SYM | Botanical Name | Common name | Mature Height (m) | Pot size | Spacing (m²) |
| TREES | | | | | |
| Cc | Cyathea cooperi | Australian Tree Fern | 6m | 100L | As Shown |
| TI | Tibouchina lepidota 'Alstonville' | Andean Princess Flower | 5m | 100L | As Shown |
| AI | Acacia longifolia | Sydney Golden Wattle | 8m | 100L | As Shown |
| Oe | Olea europaea 'Correggiola' | Orreggiola Olive | 6m | 100L | As Shown |
| Ss | Sapium sebiferum 'Triadica sebifera' | Chinese Tallow Tree | 8m | 100L | As Shown |

| | | | | | |
|---------------|-----------------------------|-------------------------|-----------|-------|------|
| SHRUBS | | | | | |
| Ac | Alpinia caerulea 'Red Back' | Red Black Native Ginger | 2 x 1 | 300mm | 4/m2 |
| An | Asplenium nidus | Birds Nest Fern | 1.5 x 1.5 | 300mm | 4/m2 |
| Ph | Ligularia verde | Tractor Seat | 0.7 x 0.7 | 200mm | 3/m2 |
| PtP | Phormium tenax 'Purpureum' | New Zealand Flax | 2 x 2 | 300mm | 4/m2 |
| Anc | Arthropodium cirratum | New Zealand Rock Lily | 0.85 x 1 | 200mm | 4/m2 |
| PX | Philodendron 'Xanadu' | Xanadu | 1 x 1 | 300mm | 3/m2 |

| | | | | | |
|---------------------|--------------------------|--------------------------|---------|-------|------|
| GROUNDCOVERS | | | | | |
| Cgl | Viola hederacea | Native Violet | 0.2 x 1 | 150mm | 6/m2 |
| Pp | Pratia pendunculata | Trailing pratia | 0.2 x 1 | 150mm | 6/m2 |
| DSF | Dichondra 'Silver Falls' | Silver Falls Kidney Weed | 0.2 x 2 | 150mm | 6/m2 |
| CLIMBER | | | | | |
| Sf | Stephanotis floribunda | Madagascar jasmine | 0.5 x 2 | 150mm | 6/m2 |
| Fp | Ficus pumila | Creeping Fig | 0.5 x 2 | 150mm | 6/m2 |

| | | | | | |
|----------------|---------------------|------------------------|-----------|-------|------|
| GRASSES | | | | | |
| Cgl | Ophiopogon mondo | Mondo Grass | 0.3 x 0.6 | 150mm | 6/m2 |
| Lm | Lomandra multiflora | Many-flowered Mat Rush | 0.3 x 1.5 | 150mm | 4/m2 |

| Level 2 | | | | | |
|--------------|--------------------------------------|------------------------|-------------------|----------|--------------|
| SYM | Botanical Name | Common name | Mature Height (m) | Pot size | Spacing (m²) |
| TREES | | | | | |
| Cc | Cyathea cooperi | Australian Tree Fern | 6m | 100L | As Shown |
| Ap | Acer palmatum | Japense Maple | 4.5m | 100L | As Shown |
| TI | Tibouchina lepidota 'Alstonville' | Andean Princess Flower | 5m | 100L | As Shown |
| AI | Acacia longifolia | Sydney Golden Wattle | 8m | 100L | As Shown |
| Ss | Sapium sebiferum 'Triadica sebifera' | Chinese Tallow Tree | 8m | 100L | As Shown |

| | | | | | |
|---------------|-----------------------------|-------------------------|-----------|-------|------|
| SHRUBS | | | | | |
| Ac | Alpinia caerulea 'Red Back' | Red Black Native Ginger | 2 x 1 | 300mm | 4/m2 |
| An | Asplenium nidus | Birds Nest Fern | 1.5 x 1.5 | 300mm | 4/m2 |
| Cm | Clivia miniata | Kaffir Lily | 0.5 x 0.8 | 150mm | 3/m2 |
| Ph | Pimelea humilis | Dwarf Rice Flower | 0.6 x 1 | 300mm | 3/m2 |
| PtP | Phormium tenax 'Purpureum' | New Zealand Flax | 2 x 2 | 300mm | 4/m2 |
| I | Philodendron 'Xanadu' | Xanadu | 1 x 1 | 300mm | 3/m2 |

| | | | | | |
|---------------------|---|--------------------------|---------|-------|------|
| GROUNDCOVERS | | | | | |
| Cgl | Casaurina glauca | Swamp Oak | 0.1 x 1 | 150mm | 6/m2 |
| DSF | Dichondra 'Silver Falls' | Silver Falls Kidney Weed | 0.2 x 2 | 150mm | 6/m2 |
| Hv | Hardenbergia violacea | Purple Coral Pea | 0.5 x 2 | 150mm | 6/m2 |
| Mp | Myoporum parvifolium | Boobialla | 2 x 2 | 150mm | 6/m2 |
| TJV | Trachelospermum jasminoides 'Variegata' | Variegated Jasmine | 0.5 x 2 | 150mm | 6/m2 |

| | | | | | |
|----------------|----------------------------------|------------------------|-----------|-------|------|
| GRASSES | | | | | |
| Dc | Dianella caerulea | Flax Lilly | 1 x 2 | 150mm | 4/m2 |
| Lm | Lomandra multiflora | Many-flowered Mat Rush | 0.3 x 1.5 | 150mm | 4/m2 |
| LmV | Liriope muscari 'Variegata' | Variegated Lily Turf | 0.6 x 0.6 | 150mm | 6/m2 |
| PaN | Pennisetum alopecuroides 'Nafra' | Swamp Foxtail Grass | 0.7 x 0.8 | 150mm | 6/m2 |
| PIE | Poa laillardieri 'Eskdale' | Blue Tussock Grass | 0.6 x 0.5 | 150mm | 6/m2 |

| Level 8 | | | | | |
|--------------|-----------------------------------|------------------------|-------------------|----------|--------------|
| SYM | Botanical Name | Common name | Mature Height (m) | Pot size | Spacing (m²) |
| TREES | | | | | |
| AI | Acacia longifolia | Sydney Golden Wattle | 8m | 100L | As Shown |
| Oe | Olea europaea 'Correggiola' | Orreggiola Olive | 6m | 100L | As Shown |
| Hf | Hymenosporum flavum | Native Frangipani | 7m | 100L | As Shown |
| Ma | Melia azedarach | China Berry Tree | 10m | 100L | As Shown |
| Er | Elaeocarpus reticulatus | Blueberry Ash | 9m | 100L | As Shown |
| TI | Tibouchina lepidota 'Alstonville' | Andean Princess Flower | 5m | 100L | As Shown |

| | | | | | |
|---------------|---------------------------------|------------------------------|-----------|-------|------|
| SHRUBS | | | | | |
| Aa | Agave attenuata | Fox Tail Agave | 2 x 1.5 | 300mm | 4/m2 |
| AB | Agapanthus orientalis 'Blue' | African Lily | 1 x 1 | 300mm | 3/m2 |
| Ca | Correa alba | White Correa | 1.5 x 1.5 | 300mm | 4/m2 |
| Hs | Hebe speciosa 'Variegata' | New Zealand hebe 'Variegata' | 1.5 x 1.5 | 300mm | 4/m2 |
| Lb | Leucophyta brownii | Cushion Bush | 1 x 1.5 | 300mm | 4/m2 |
| RSM | Rhaphiolepis 'Snow Maiden' | White Indian Hawthorn | 1 x 1 | 300mm | 3/m2 |
| WBG | Westringia fruticosa 'Blue Gem' | Coastal Rosemary | 1.5 x 1.3 | 300mm | 4/m2 |

| | | | | | |
|---------------------|--------------------------|--------------------------|------------|-------|------|
| GROUNDCOVERS | | | | | |
| Cg | Carpobrotus glaucescens | Pigface | 0.3 x 2 | 150mm | 6/m2 |
| DSF | Dichondra 'Silver Falls' | Silver Falls Kidney Weed | 0.2 x 2 | 150mm | 6/m2 |
| Gt | Gazania tomentosa | Treasure Flower | 0.3 x 1.5 | 150mm | 6/m2 |
| Hs | Hibbertia scandens | Snake Vine | 0.3 x 2 | 150mm | 6/m2 |
| Mr | Mentha requienii | Creeping Mint | 0.2 x 1 | 150mm | 6/m2 |
| Sc | Scaevola calendulacea | Fan Flower | 0.75 X 0.4 | 150mm | 6/m2 |
| Ss | Senecio serpens | Blue Chalk Sticks | 0.3 x 1 | 150mm | 6/m2 |

| | | | | | |
|----------------|----------------------------------|------------------------|-----------|-------|------|
| GRASSES | | | | | |
| Dc | Dianella caerulea | Flax Lilly | 1 x 2 | 150mm | 4/m2 |
| Lf | Lomandra filiformis | Wattle Mat Rush | 0.2 x 0.5 | 150mm | 6/m2 |
| Lm | Lomandra multiflora | Many-flowered Mat Rush | 0.3 x 1.5 | 150mm | 4/m2 |
| LmV | Liriope muscari 'Variegata' | Variegated Lily Turf | 0.6 x 0.6 | 150mm | 6/m2 |
| PaN | Pennisetum alopecuroides 'Nafra' | Swamp Foxtail Grass | 0.7 x 0.8 | 150mm | 6/m2 |
| PsR | Pennisetum setaceum 'Rubrum' | Purple Fountain Grass | 1.5 x 1 | 150mm | 4/m2 |

| | | | | | |
|-------------------------|-----------------------------|-------------------------|-----------|-------|------|
| COMMUNITY GARDEN | | | | | |
| Ac | Alpinia caerulea 'Red Back' | Red Black Native Ginger | 2 x 1 | 300mm | 4/m2 |
| Bv | Beta vulgaris | Beetroot | 0.4 x 0.4 | 300mm | 6/m2 |
| Ls | Lactuca sativa | Lettuce | 0.9 x 0.3 | 300mm | 6/m2 |
| Rs | Raphanus sativus | Radish | 0.5 x 0.2 | 300mm | 6/m2 |

Planting Palette

Trees



Acacia longifolia



Acer palmatum



Cyathea cooperi



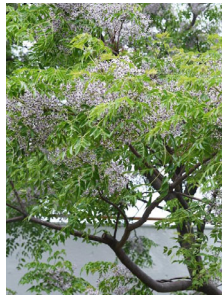
Elaeocarpus reticulatus



Hymenosporum flavum



Olea europaea 'Corregiola'



Melia azedarach



Sapium setaferum 'triadica sebifera'



Tibouchina lepidota 'Alstonville'

Shrubs



Agave attenuata



Alpinia caerulea 'Red Back'



Asplenium nidus



Agapanthus orientalis 'Blue'



Arthropodium cirratum



Clivia miniata



Correa alba



Hebe speciosa 'Variegata'



Leucophyta brownii



Ligularia verde



Pimelea humilis



Phormium tenax 'Purpureum'



Philodendron 'Xanadu'

Planting Palette

Shrubs



Rhaphiolepis 'Snow Maiden'



Westringia fruticosa 'Blue Gem'

Groundcovers & Climbers



Casuarina glauca



Carpobrotus glaucescens



Dichondra 'Silver Falls'



Gazania tomentosa



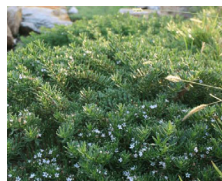
Hardenbergia violacea



Hibbertia scandens



Mentha requienii



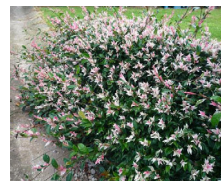
Myoporum parvifolium



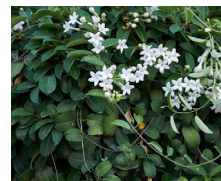
Scaevola calendulacea



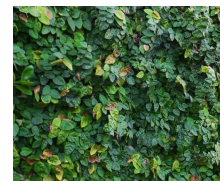
Senecio serpens



Trachelospermum jasminoides 'Variegata'



Stephanotis floribunda

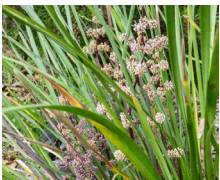


Ficus pumila

Grasses



Dianella caerulea



Lomandra multiflora



Lomandra filiformis



Liniope muscari 'Variegata'



Pennisetum alopecuroides 'Nafay'



Pennisetum setaceum 'Rubrum'



Poa labillardieri 'Eskdale'

Edible Planting



Alpinia caerulea 'Red Back'



Beta vulgaris

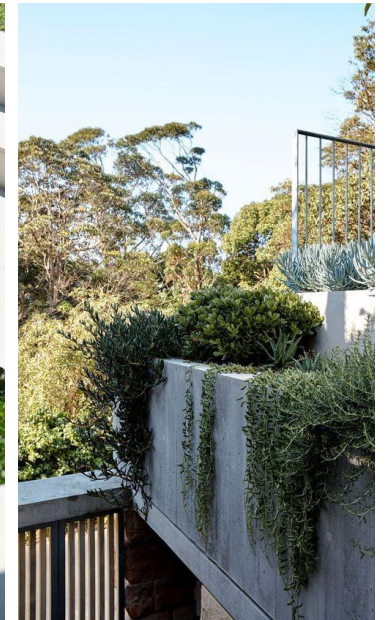


Lactuca sativa



Raphanus sativus

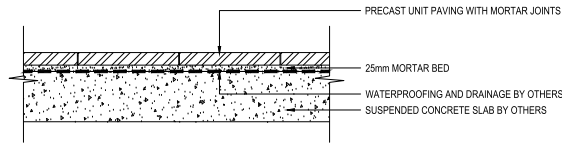
Precedent Images/ Planting



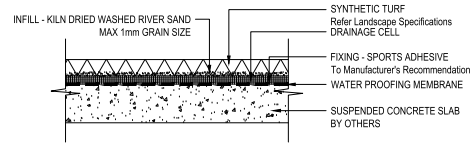
Precedent Images/ Materiality



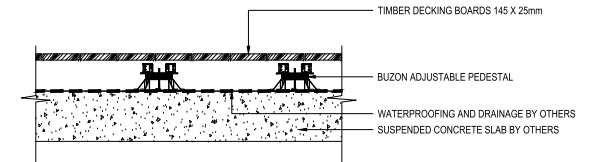
Typical Details/ Hardscape and Softscape



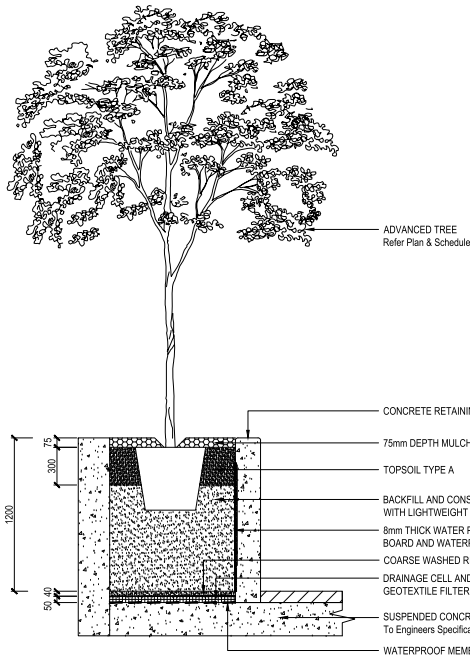
1 TYPICAL DETAIL - PAVING ON SLAB
SCALE 1:20



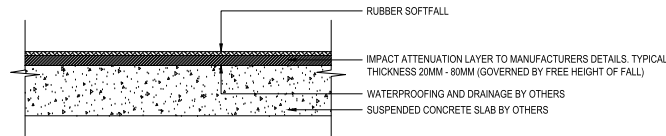
2 TYPICAL DETAIL - SYNTHETIC TURF ON SLAB
SCALE 1:20



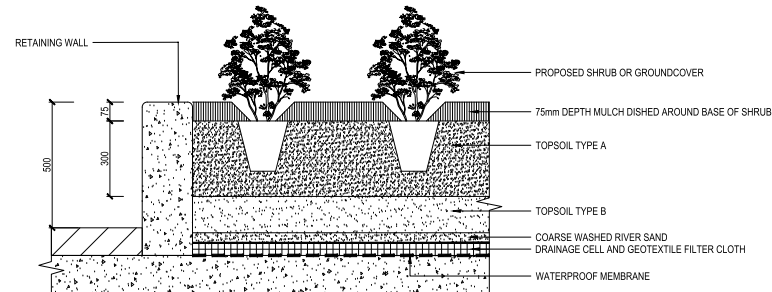
3 TYPICAL DETAIL - TIMBER DECK ON SLAB
SCALE 1:20



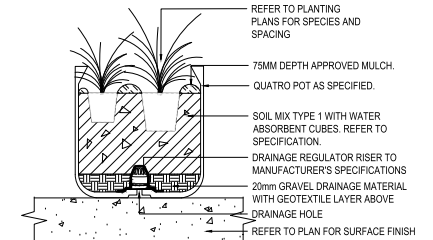
4 TYPICAL DETAIL - 1200mm HIGH PLANTER ON SLAB
SCALE 1:40



5 TYPICAL DETAIL - SOFTFALL ON SLAB
SCALE 1:20



6 TYPICAL DETAIL - 500mm HIGH PLANTER ON SLAB
SCALE 1:20



7 TYPICAL DETAIL - PLANTING IN POT
SCALE 1:20

place
design
group.